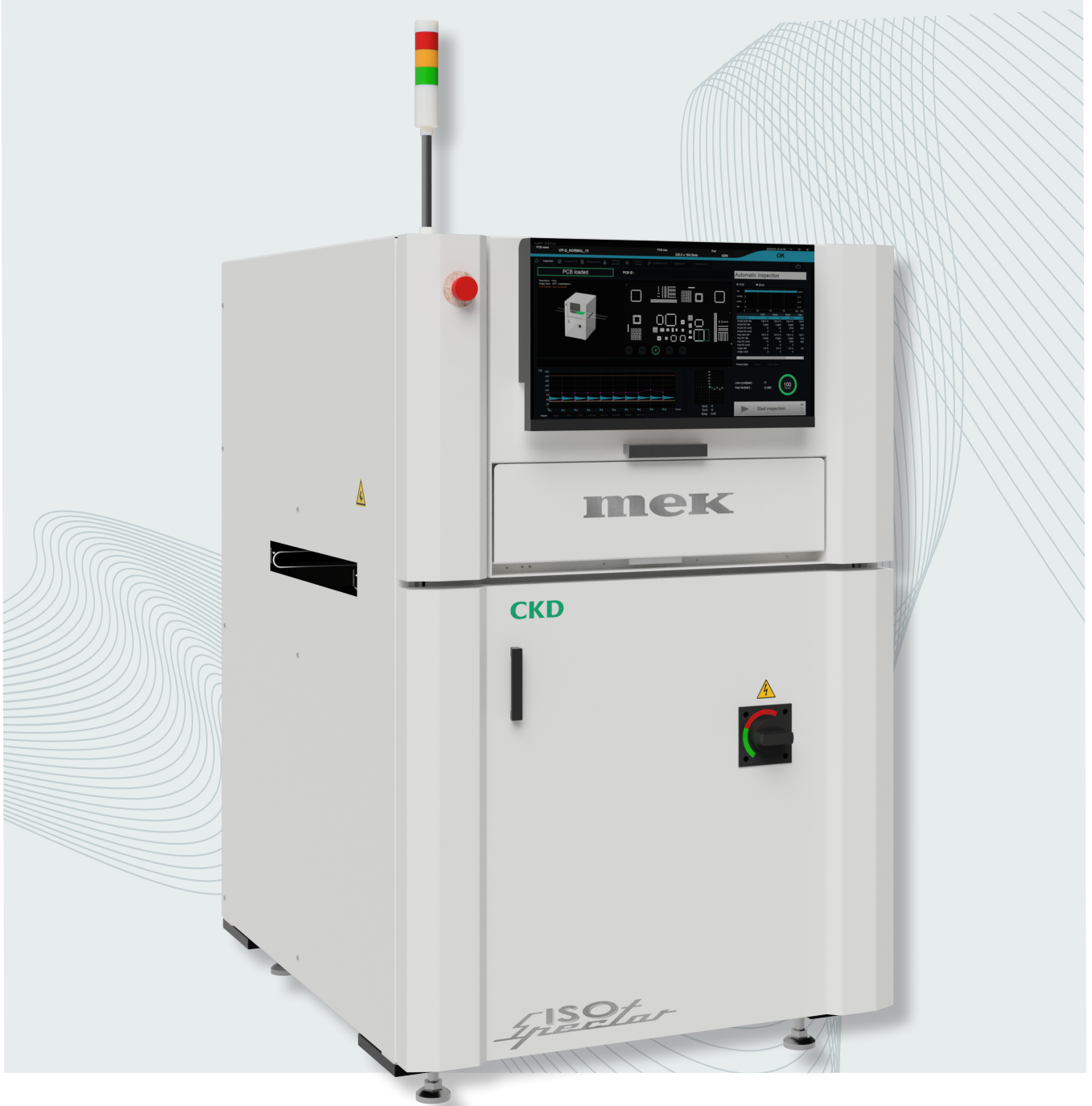


Models: S30 | S31

ISO-SPECTOR



Mek ISO-Spector

Inline 5D Solder Paste Inspection System

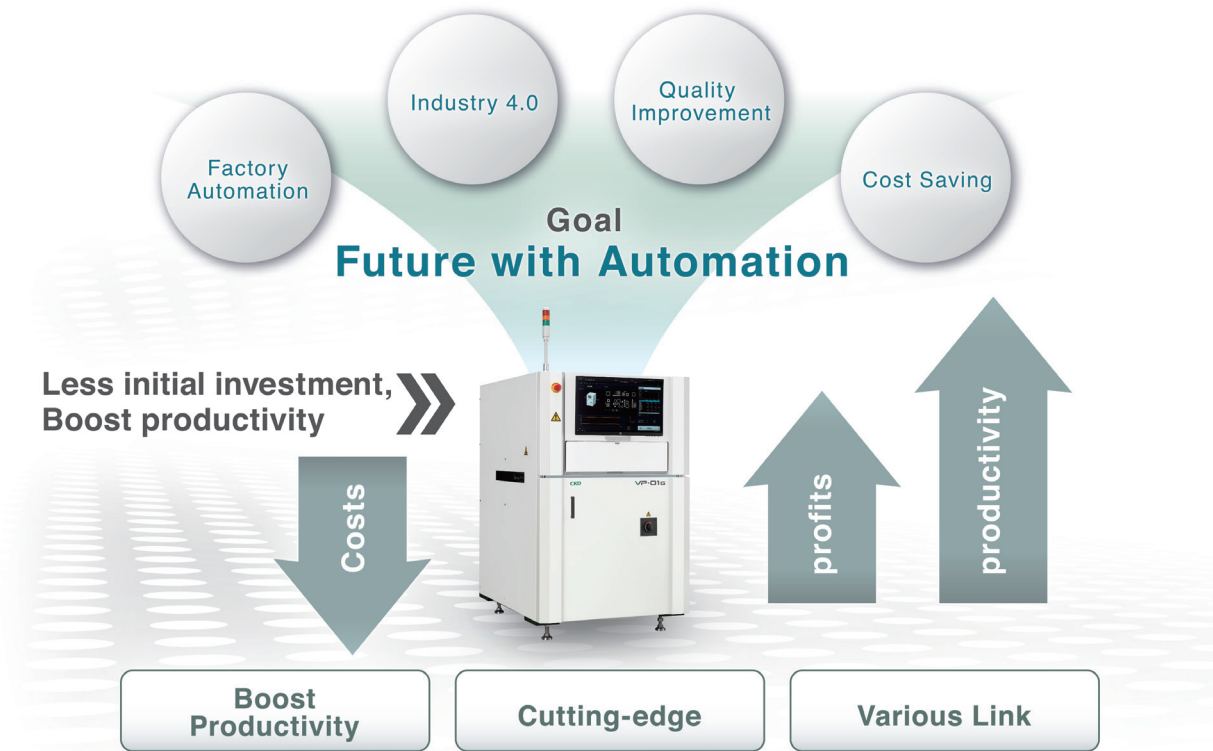
mek[®]
marantz electronics ltd

because inspection matters

Inline 5D Solder Paste Inspection System

Benefits

- **SPC And Catch**
Live SPC data for printing trends and distribution histograms. Allow for fast diagnosis of printing issues. Compatible with Mek Catch System.
- **Closed Loop**
Improve quality by feeding data to previous and next systems in line.
- **Foreign Material And Glue Detection**
Detect solder smear and PCB contamination for out side of the aperture detection. Glue detection option to check correct glue application for wave soldered SMT applications.
- **Resolution Switching**
Select inspection resolution high speed, standard speed and high resolution modes. The machine is available in 4 resolution ranges 25/12.5/8.5µm, 20/10/7µm, 15/7.5/5µm and 10/5µm.
- **Bad Mark Communication**
Share skipped PCBs to reduce programming functions on later machines.
- **Data Log Output**
Data log file out put for use with external applications.



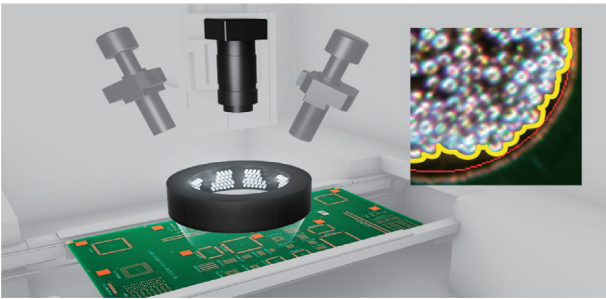
Models: S30 | S31



Inline 5D Solder Paste Inspection System



Mek ISO-Spector Features

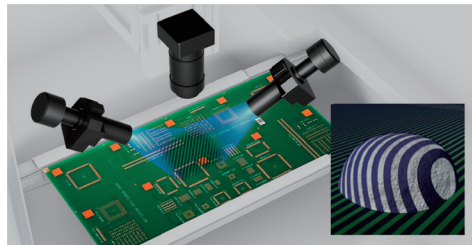


Ring Light

The outline of the solder paste is extracted through the use of a 360 degree ring light that projects against inspection objects (solder paste). This method of inspection isolates solder paste on the PCB and performs three dimensional measurements to achieve more reliable inspections.

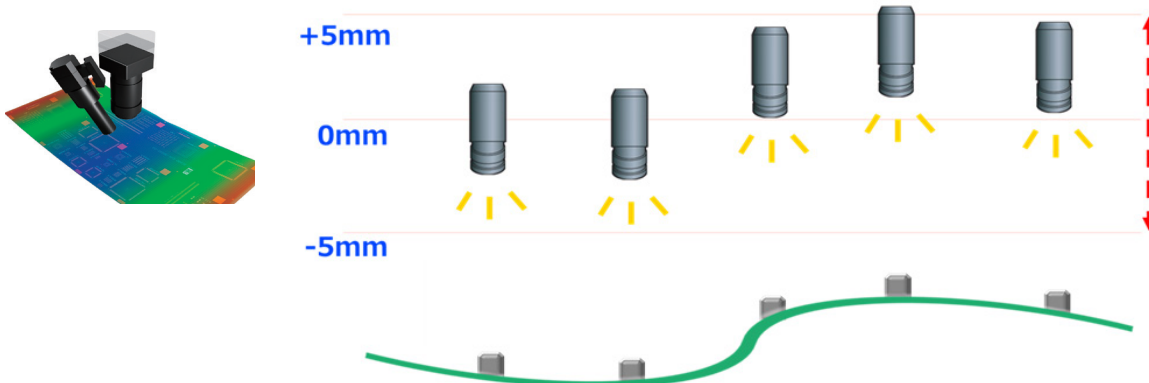
3D Projectors

The camera captures the moiré created from the dual projectors. The strip pattern is shifted to create multiple samples. This pattern is used to calculate the relative height of the solder paste.



Z Axis Auto-Focus

PCB warpage is measured during the inspection and adjusts the height of the camera automatically to compensate for the PCB warpage.



Models: S30 | S31



Inline 5D Solder Paste Inspection System

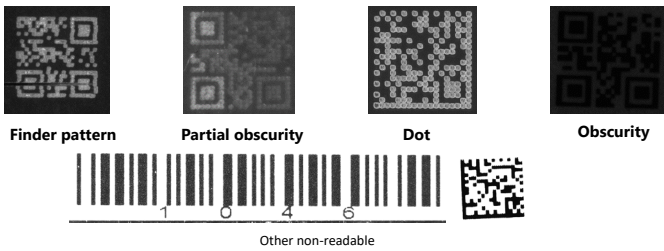


Mek ISO-Spector Features

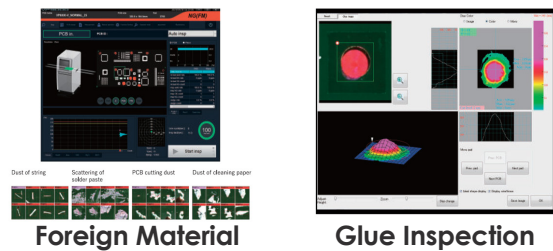
Fast Program Creation



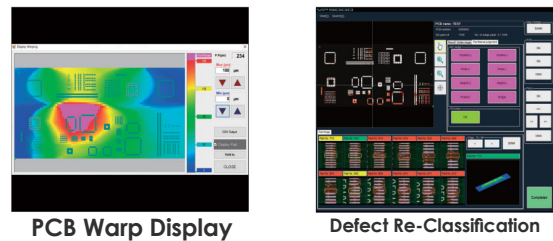
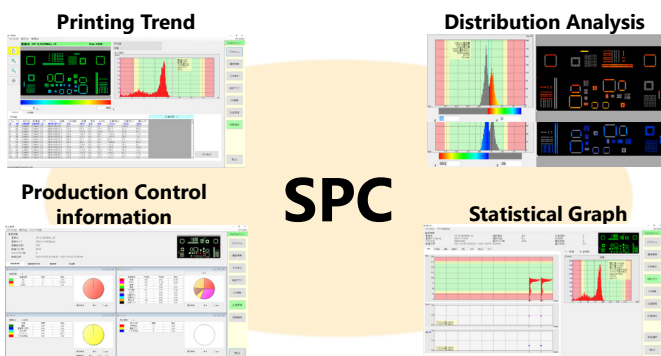
Barcode Reading Function



Inspection Capabilities



SPC Function



Specifications ISO-Spector

Specifications	ISO-Spector S30		ISO-Spector S31	
PCB Size	Max Size: 510x510mm (21.3"x21.3")			
Projection	Single Projection		Dual Projection	
Characteristics				
Product Type	CMOS Mono Camera -Global Shutter Spec-			
Inspection Principle	Phase Shift + Hybrid Inspection - 2D Ring light and 3D Projector(s)			
Inspection Item	Volume, Projection, Dimness, Area, Shift, Average Height, Bridging, No Solder, Coplanarity, Foreign Material, Glue (option)			
Parts Inspection	Presence, Orientation (polarity), Shape, Offset, Text, Color			
Clamping Method	Side, Top and Bottom Simultaneous Clamping			
PCB Stop/PCB Load&Transfer	Sensor Control System (No stopper)/Double Side PCB Loading&Transfer System			
PCB Warpage	±5mm (Original Mechanical Adjustment System)			
System Specifications				
Inspection Resolution	25/12.5/8.5 μm	20/10/7 μm	15/7.5/5 μm	10/5 μm
Solder Paste Height (Standard)	Less than 400μm	Less than 300μm	Less than 300μm	Less than 150μm
Solder Paste Height (Optional)	Less than 600μm	Less than 450μm	Less than 450μm	Less than 225μm
Max. Inspection Speed	9400mm ² /sec	6000mm ² /sec	3300mm ² /sec	1400mm ² /sec
Field of View	50x50mm	40x40mm	30x30mm	20x20mm
Height resolution	1 μm			
Accuracy	Within 2% (Dual Projection)/Within 3% (Single Projection)			
GR & R	Within 10%			
Interfacing				
Inspection Program	CKD VPDS Programming System (Program Creation Time Min. 3 mins) ePM Programming Software (Option)			
SPC	CKD Realdata software system (Real time histogram, X Bar & R Chart, CP/CPK Chart, Real time SPC, SPC Alarm, SPC report)			
Optional features	Closed Loop, ePM, Auto Program Launch, Area Standard Jig, Height Standard Jig, ITAC, Q-up Opti, Dual Projection, CE Compliance			
Repair/Monitor/SPC System/MES-interface	Mek Catch System (Windows 7/8/10) (Option)			
General				
Power Supply	Single phase AC200V - 240V ±10% 50/60Hz ±1Hz			
Power Consumption	Max. 1KVA			
Pneumatic Supply	0.3 - 0.4 Mpa (4kgf/cm ²)			
Fixed Rail	Front (Or Specify)			
Flow Direction	Left To Right (Or Specify)			
Machine Interface	SMEMA			
External Size	W938 x D1191 x H1480 mm (37" x 47" x 58")			
Weight	600kg (1323lbs)			

Mek Europe BV
Polluxstraat 2b
5047 RB Tilburg, Netherlands
T +31 40 7114111
info@mek-europe.com
www.mek-europe.com

Mek Europe reserves the right to change
the design and specifications without
notice. © Mek Europe BV, February 2025

mek[®]
marantz electronics ltd

because inspection matters